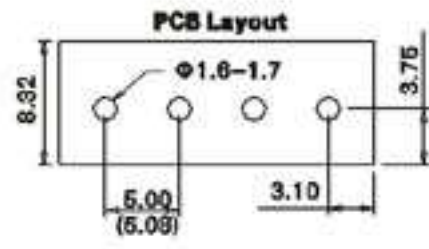
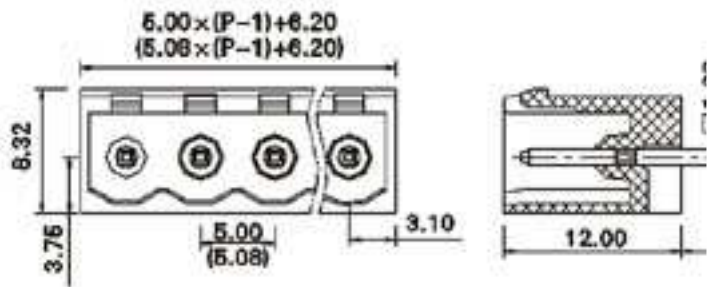
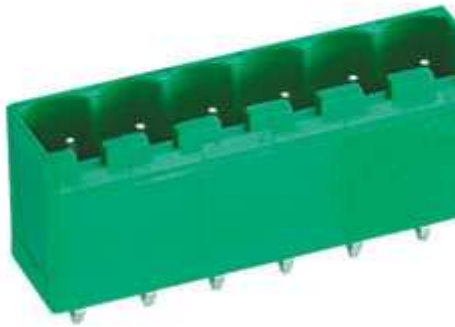


TLPHC200V/TLPHC300V



Technical data

Pitch (间距):	5.00mm(5.08mm)	
Approval (认证):		
Rated voltage (电压):	300V	250V
Rated current (电流):	12A	12A
PCB hole Dia(PCB直径):	$\phi 1.6-1.7$ mm	

Part Number

型号(Model)	TLPHC-200V-02P(TLPHC-300V-02P)
:	TLPHC-200V-24P(TLPHC-300V-24P)