

JBC

www.jbctools.com



Soldering Iron Handles

Ref. T210 / T245 / T470

Features

For C245 Cartridge range

The soldering iron handles for general purposes are perfect for both SMD components and jobs with high power requirements (e.g. ground plane soldering).

General Purpose Handle

Ref. T245-A



Blue Handle

Ref. T245-PA



Non-slip Handle

Ref. T245-B



Soft Thermal Insulator Handle

Ref. T245-C



Nitrogen Handle

Ref. T245-NA

This allows you to work in an oxygen-free atmosphere which means better quality in soldering. It offers extra heat to the solder joint and helps prevent oxidation. The JBC GN-A Nitrogen Generator Module or an external nitrogen feed is needed at the operator's bench.



Note: All models are supplied with a 1.5m cable.

For C210 Cartridge range

The T210 handles are perfect for precision soldering jobs with medium power requirements. For its size, it can work with conventional or small SMDs, even under a microscope.

Precision Purpose Handle

Ref. T210-A



Blue Precision Handle

Ref. T210-PA



For C470 & C245 Cartridge ranges

For intensive soldering jobs requiring continued high thermal power. They feature good thermal insulation and a screw which fixes the cartridge and prevents its rotation.

HD Purpose Handle

Ref. T470-A



HD Purpose Handle with 3m cable

Ref. T470-SA

Tri-lobed HD Handle

Ref. T470-ZA

For better handling of the tool.



Thermal Insulator HD Handle

Ref. T470-FA



Thermal Insulator HD Handle with 3m cable

Ref. T470-MA

Note: All models are supplied with a 1.5m cable except those specified with 3m.

Quick Tip Changer

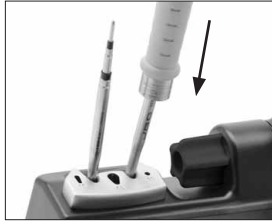
Save time and change cartridges safely without switching the station off.

1. Removing



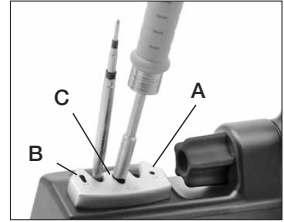
Place the handle in the extractor and pull to remove the cartridge.

2. Inserting



Place the handle on top of the new cartridge and press down slightly.

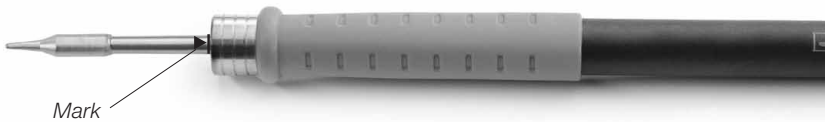
3. Fixing



Use the holes for fixing the cartridge* as follows:
A. For straight C210.
B. For curved C210.
C. For C245.

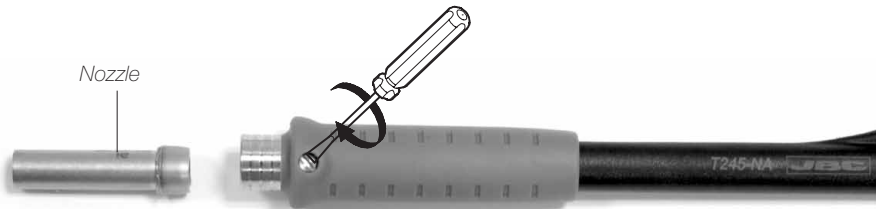
*Important

It is essential to insert the cartridges as far as the mark for a proper connection.



T245-NA Changing Nozzles

1. Remove the nozzle before changing the cartridge.
2. Loosen the screw.
3. Remove the cartridge with the cartridge extractor.
4. Tighten the screw. This is necessary for the tool to function.



Handle compatibility

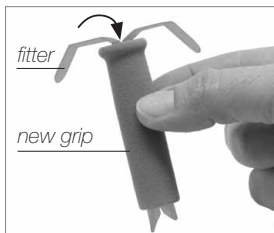
	Cartridge Range	Control units				
		CD	DI	DDE	DME	HDE
T210-A	C210	●	●	●	●	
T210-PA		●	●	●	●	
T245-A	C245	●	●	●	●	
T245-PA		●	●	●	●	
T245-B		●	●	●	●	
T245-C		●	●	●	●	
T245-NA*		●	●	●	●	
T470-A	C245	●	●	●	●	
	C470					●
T470-SA	C245	●	●	●	●	
	C470					●
T470-ZA	C245	●	●	●	●	
	C470					●
T470-FA	C245	●	●	●	●	
	C470					●
T470-MA	C245	●	●	●	●	
	C470					●

* T245-NA: The KNE Nitrogen Kit is required.

T245-C Changing Grips

Using the **fitters** you can easily replace the grips of the T245-C. Supplied with 4 grips (Ref. 0016057).

1. Inserting fitters



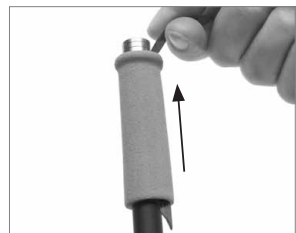
Place the fitters into the new grip.

2. Inserting handle



Insert both fitters into the handle and push until the replacement is well placed.

3. Removing fitters



Remove the fitters by pulling upwards.

Accessories

Fume extractor

Ref. F3435 (for T245 / T470)

Ref. F3450 (for T210)

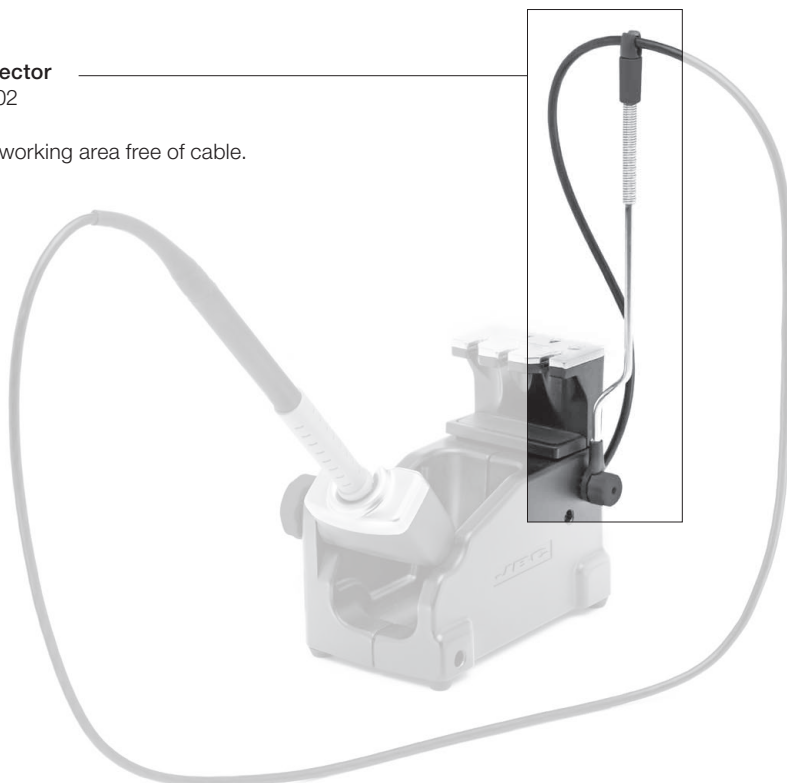
Clips can be quickly removed for easy maintenance.



Cable collector

Ref. CC3702

Keeps the working area free of cable.



Safety



It is imperative to follow safety guidelines to protect health and prevent electric shock, injury, fire or explosions.

- Do not use the tool for any purpose other than soldering or rework. Incorrect use may cause fire.
- The power cord must be plugged into approved bases. Be sure that it is properly grounded before use. When unplugging it, hold the plug, not the wire.
- Do not work on electrically live parts.
- The tool should be placed in the stand when not in use in order to activate the sleep mode. The soldering tip, the metal part of the tool and the stand may still be hot even when the station is turned off. Handle with care, including when adjusting the stand position.
- Do not leave the appliance unattended when it is on.
- It is necessary to turn the station off before changing tips.
- Do not cover the ventilation grills. Heat can cause inflammable products to ignite.
- Use a "non residue" classified flux and avoid contact with skin or eyes to prevent irritation.
- Be careful with the fumes produced when soldering.
- Keep your workplace clean and tidy. Wear appropriate protective glasses and gloves when working to avoid personal harm.
- Utmost care must be taken with liquid tin waste which can cause burns.
- This appliance can be used by children over the age of eight and also persons with reduced physical, sensory or mental capabilities or lack of experience provided that they have been given adequate supervision or instruction concerning use of the appliance and understand the hazards involved. Children must not play with the appliance.

Maintenance

Before carrying out maintenance or storage, always unplug the stand and the tool.

- Check periodically that the metal parts of the tool and the stand are clean to ensure detection of the tool when it is in the stand. Use a damp cloth or alcohol.
- Periodically check all cables and tubes connections.
- Replace any defective or damaged pieces. Use original JBC spare parts only.
- Repairs should only be performed by a JBC authorized technical service.

JBC

Warranty

JBC's 2 year warranty covers this equipment against all manufacturing defects, including the replacement of defective parts and labour.

Warranty does not cover product wear due to use or mis-use.

In order for the warranty to be valid, equipment must be returned, postage paid, to the dealer where it was purchased.



This product should not be thrown in the garbage.

In accordance with the European directive 2002/96/EC, electronic equipment at the end of their life must be collected and returned to an authorized recycling facility.