

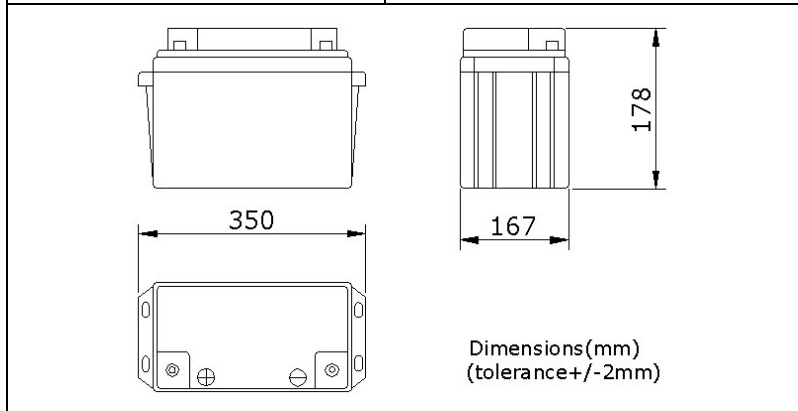
# EnergiVm

CE  MH 28269

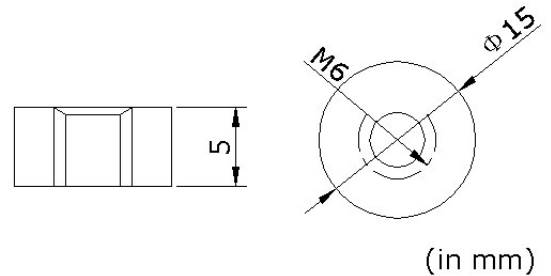
MVH12650(12V65AH)

## PHYSICAL SPECIFICATION

Nominal Voltage Nominal Capacity (10HR)		12V 65Ah	
Dimension	Length	350±2mm	(13.78 inches)
	Width	167±2mm	(6.57 inches)
	Container Height	178±2mm	(7.01 inches)
	Total Height	178±2mm	(7.01 inches)
Weight		Approx. 22.5 Kg (50.87lbs)	
Standard Terminal		B3(Bolt-and-nut terminal) Bolt Type: M6	



Bolt-and-nut terminal  
Bolt Type:M6



## ELECTRICAL SPECIFICATION

Characteristics		
Capacity	20 hour rate (3.25A)	68Ah
	10 hour rate (6.5A)	65Ah
	5hour rate (11.05A)	56Ah
	3hour rate (16.25A)	49Ah
	1hour rate (39A)	40Ah
Capacity affected by temperature	40°C (104 °F)	102%
	25°C (77 °F)	100%
	0°C (32 °F)	85%
Internal Resistance	Full charged battery (25°C, 77 °F) 5mΩ	
Constant Voltage Charge	Cycle	Initial Charging Current less than 16.25A Voltage 14.1~14.4V at 25°C (77 °F) Temperature Coefficient -30mV/°C
	Standby	No limit on Initial Charging Current Voltage 13.5~13.8V at 25°C (77 °F) Temperature Coefficient -20mV/°C

