

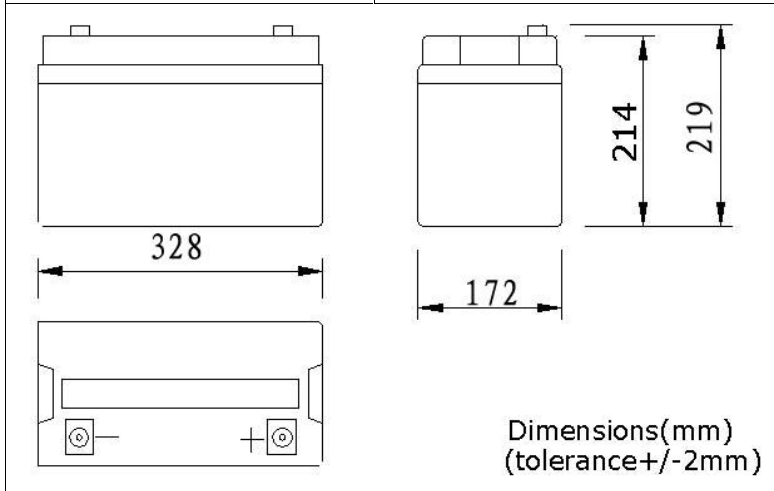
EnergiVm

CE  MH 28269

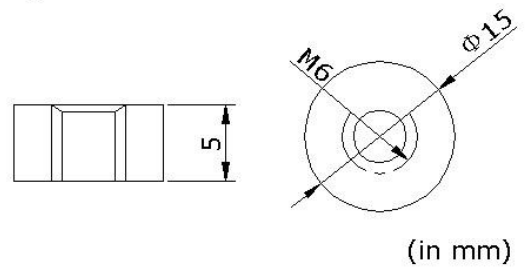
MVG121000(12V100AH)

PHYSICAL SPECIFICATION

Nominal Voltage Nominal Capacity (10HR)		12V 100Ah
Dimension	Length	328 2mm (12.91 inches)
	Width	172 2mm (6.77 inches)
	Container Height	214 2mm (8.42 inches)
	Total Height	219 2mm (8.62 inches)
Weight		Approx. 29 Kg (63.9lbs)
Standard Terminal		Bolt-and-nuts terminal Bolt Type: M6



Bolt-and-nut terminal
Bolt Type:M6



ELECTRICAL SPECIFICATION

Characteristics									
Capacity	<table border="1"> <tr> <td>10 hour rate (10A)</td> <td>100Ah</td> </tr> <tr> <td>5 hour rate (17A)</td> <td>85Ah</td> </tr> <tr> <td>3 hour rate (25A)</td> <td>75Ah</td> </tr> <tr> <td>1 hour rate (60A)</td> <td>60Ah</td> </tr> </table>	10 hour rate (10A)	100Ah	5 hour rate (17A)	85Ah	3 hour rate (25A)	75Ah	1 hour rate (60A)	60Ah
10 hour rate (10A)	100Ah								
5 hour rate (17A)	85Ah								
3 hour rate (25A)	75Ah								
1 hour rate (60A)	60Ah								
Capacity affected by temperature	<table border="1"> <tr> <td>40 (104 °F)</td> <td>102%</td> </tr> <tr> <td>25 (77 °F)</td> <td>100%</td> </tr> <tr> <td>0 (32 °F)</td> <td>85%</td> </tr> </table>	40 (104 °F)	102%	25 (77 °F)	100%	0 (32 °F)	85%		
40 (104 °F)	102%								
25 (77 °F)	100%								
0 (32 °F)	85%								
Internal Resistance	Full charged battery (25 ,77 °F)5.3m								
Designed life	10 Years (25)								
Constant Voltage Charge	Cycle	Initial Charging Current less than 25A Voltage 14.1~14.4V at 25 (77 °F) Temperature Coefficient -30mV/							
	Standby	No limit on Initial Charging Current Voltage 13.5~13.8V at 25 (77 °F) Temperature Coefficient -20mV/							

Discharge curves @ 25 (77 °F)

