

JBC

www.jbctools.com

English



Junior Tip Cleaner

Ref. CLMS-A

Packing List

The following items should be included:

Junior Tip Cleaner1 unit
Ref. CLMS-A

Brushes for CLMS-A2 units
Ref. CLMS-A8



Manual1 unit
Ref. 0015146

AC Adapter1 unit
Ref. 0015971



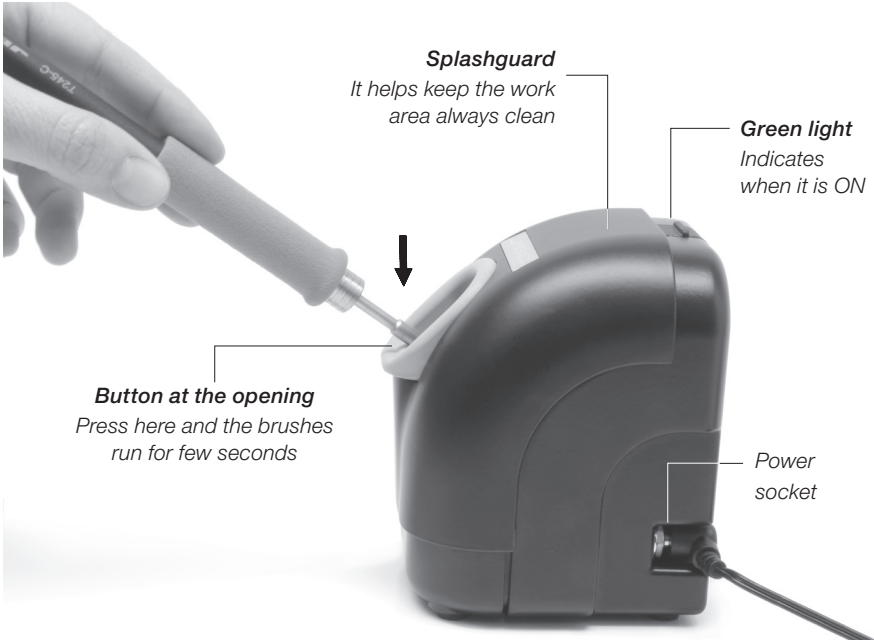
EU



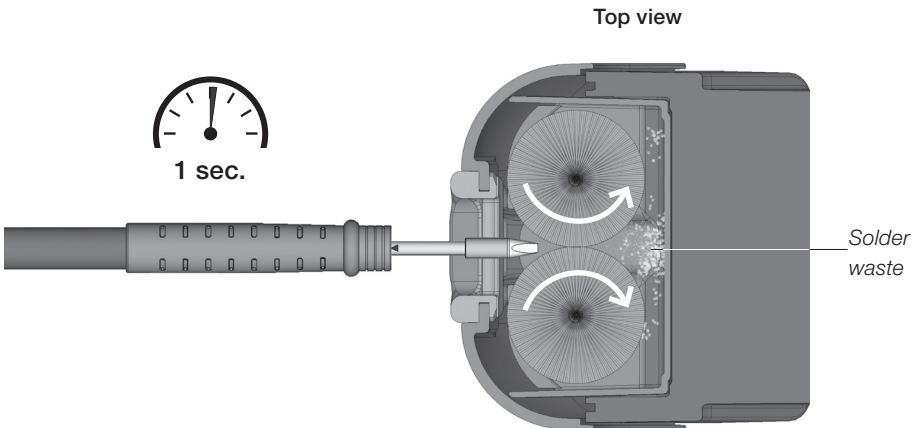
US

Operation & Features

The CLMS-A consists of 2 motorized brushes that start working when the operator presses the button at the opening with the tool.



For the best uniform cleaning, we **recommend** you place the tip between the 2 brushes and turn it for only 1 second.



Continuous mode

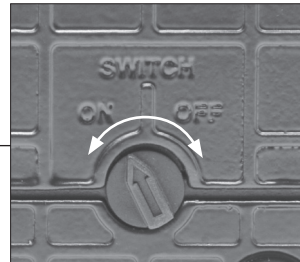
The tip cleaner has a second operating mode whereby the brushes run continuously without having to press the button.

Bottom view



Switch ON/OFF

Turn the switch to ON and the brushes are activated in continuous mode.



Changing Gate Protector

Easily replace the **Gate Protector**
Ref. 0015972 as follows:

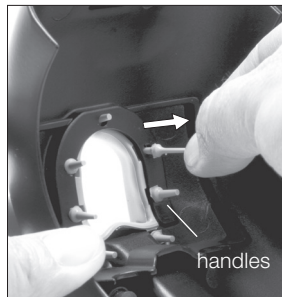


1. Pull the gate protector broken



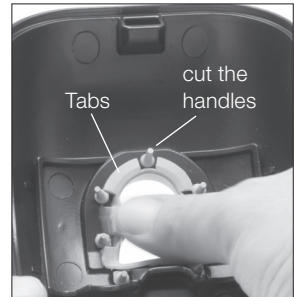
Unplug from the mains and pull the damaged gate to replace it.

2. Insert the new gate protector



Insert the new one and as you have the handles well positioned, pull them to secure it.

3. Fix the gate protector



Once set, make sure the tabs are well placed.

Cut the handles with pliers.

Changing brushes and cleaning

Easily replace the brushes and clean the solder collector tray as follows:

1. Open the splashguard



Unplug from the mains and slide the tab on the top to open the splashguard.

2. Remove the brushes



Remove by pulling out the bottom end.

3. Remove the solder collector tray



Once clean, return it to its place followed by the brushes.

Maintenance

Before carrying out maintenance or storage, always unplug the equipment from the mains.

- Use a damp cloth to clean the splashguard and the inside.
- Maintain the brushes clean and replace when necessary. The same for the solder collector tray.
- Replace any defective or damaged piece. Use original JBC spare parts only.
- Repairs should be performed only by a JBC authorized technical service.

Safety



It is imperative to follow safety guidelines to prevent electric shock, injury, fire or explosion.

- Do not use the appliance for any purpose other than tip cleaning. It is not a tool stand.
- The AC Adapter power supply must be plugged into approved bases. Be sure that it is properly grounded before use. Remove it by pulling the plug, not the wire.
- Do not leave the appliance unattended when it is running.
- Avoid contact with moving parts.
- Keep your workplace clean and tidy. Wear appropriate protective glasses and gloves when working to avoid personal harm.
- Utmost care must be taken with liquid tin waste which can cause burns.
- This appliance can be used by children over the age of eight and also persons with reduced physical, sensory or mental capabilities or lack of experience provided that they have been given adequate supervision or instruction concerning use of the appliance and understand the hazards involved. Children must not play with the appliance.
- Maintenance must not be carried out by children unless supervised.

Specifications

- Weight: 1.3 kg (2.9 lb)
- Dimensions: 91 x 95 x 114 mm
- Brush diameter: 34 mm
- Brush speed: 550 rpm
800 rpm (continuous mode)
- AC Adapter: Input: 100 - 240 V, 50 - 60Hz
Output: DC 12V, 1A

Complies with CE standards.
ESD protected housing "skin effect".

JBC

Warranty

JBC's 2 year warranty covers this equipment against all manufacturing defects, including the replacement of defective parts and labour. Warranty does not cover product wear due to use or mis-use.

In order for the warranty to be valid, equipment must be returned, postage paid, to the dealer where it was purchased.



This product should not be thrown in the garbage.
In accordance with the European directive 2002/96/EC, electronic equipment at the end of their life must be collected and returned to an authorized recycling facility.