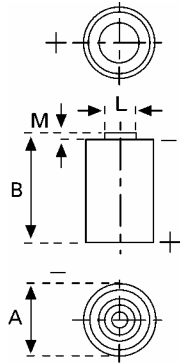


Data Sheet



Type Number 6127
Designation IEC ---
System Li-Manganese dioxide / Organic Electrolyte

UL Recognition:..... MH 13654 (N)
Nominal Voltage 3 V
Typical Capacity C 950 mAh
 5.6K Ohm, at 20°C down to 2 V

Weight (approx.) 11,5 g
Volume 5 ccm
Coding..... Date of Manufacturing Quater/Year

Temperature Ranges
 Storage min -55°C max. 75 °C
 Discharge -30°C 75°C

Dimensions
 Diameter (A) min 14,45 max. 14,75
 Height (B) 24,9 25,1
 Shoulder Diameter[E]..... 7
 Shoulder Height [C]..... 0,6

Segment Electronic

Main Applications Electronic

Typical Capacities (at 20°C)

Discharge Type	Load	End Voltage:	2.0 V
Continuous 24h/d,7d/w Current [µA]:	5600 Ω	Time: Capacity [mAh]: Energy [mWh]:	1860 h 950 2700
Continuous 24h/d,7d/w Current [µA]:	2000 Ω	Time: Capacity [mAh]: Energy [mWh]:	670 h 930 2600
Continuous 24h/d,7d/w Current [µA]:	1000 Ω	Time: Capacity [mAh]: Energy [mWh]:	335 h 900 2400
Constant current	50 µA	Capacity [mAh]:	1000

All Data contained herein is for single cells for battery applications, performance data may vary from single cell data, depending on specific battery configuration